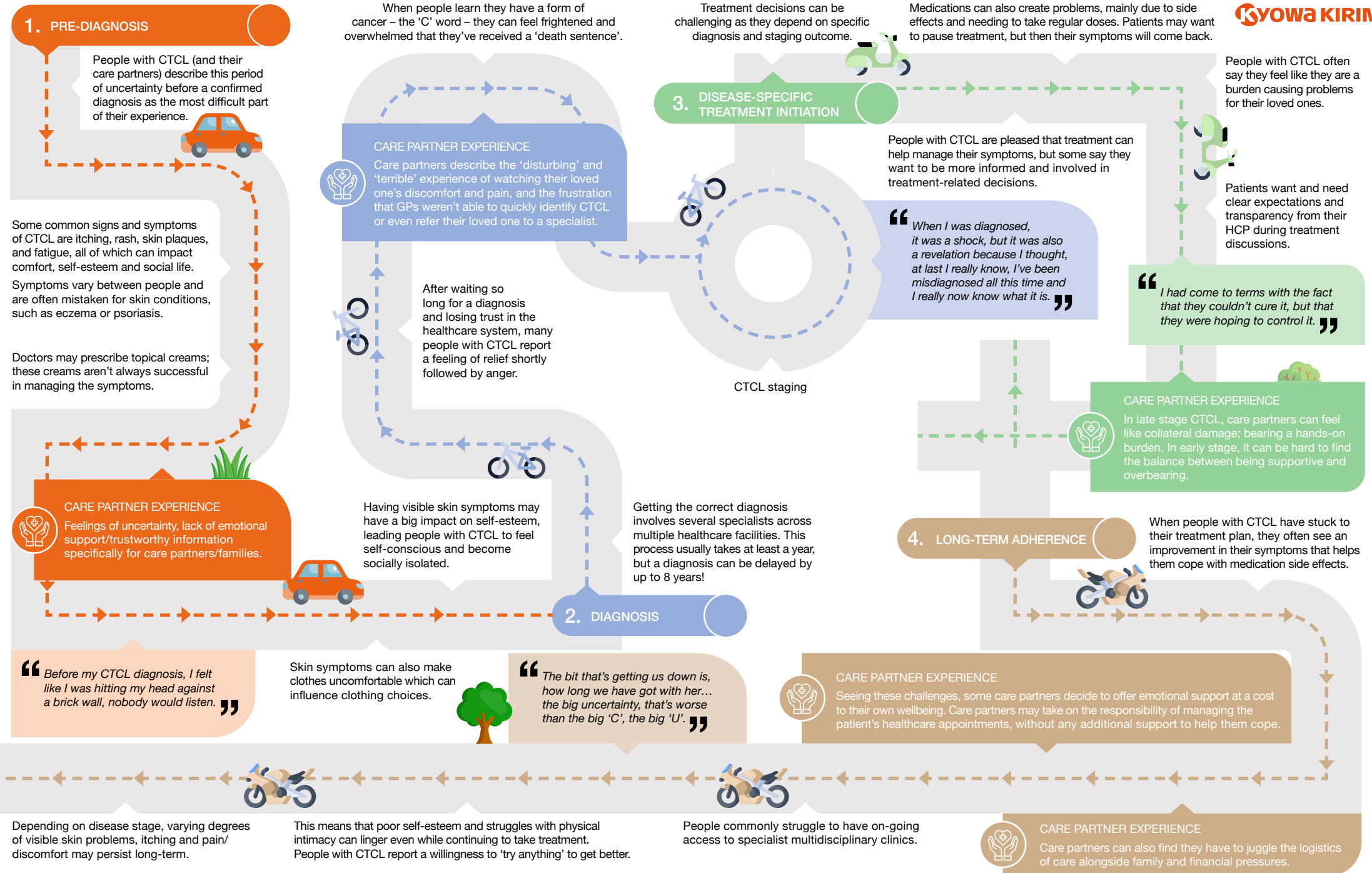


Mapping the lived healthcare experiences of people with cutaneous t-cell lymphoma (CTCL; mycosis fungoides and sézary syndrome)

The challenge of living with CTCL doesn't only come from uncomfortable symptoms; people with CTCL also struggle with the emotional burden of their condition. The emotional burden of CTCL can evolve over time, from getting a diagnosis to treatment, and beyond. Using insights from patient interviews, surveys and desk research, we've mapped how the feelings of people with CTCL can change over the course of their disease, and what unmet needs still exist in this community.

KKI/INT/KKI/1085 May 2025

This map was validated by Cutaneous Lymphoma Foundation and developed and fully funded by Kyowa Kirin International.

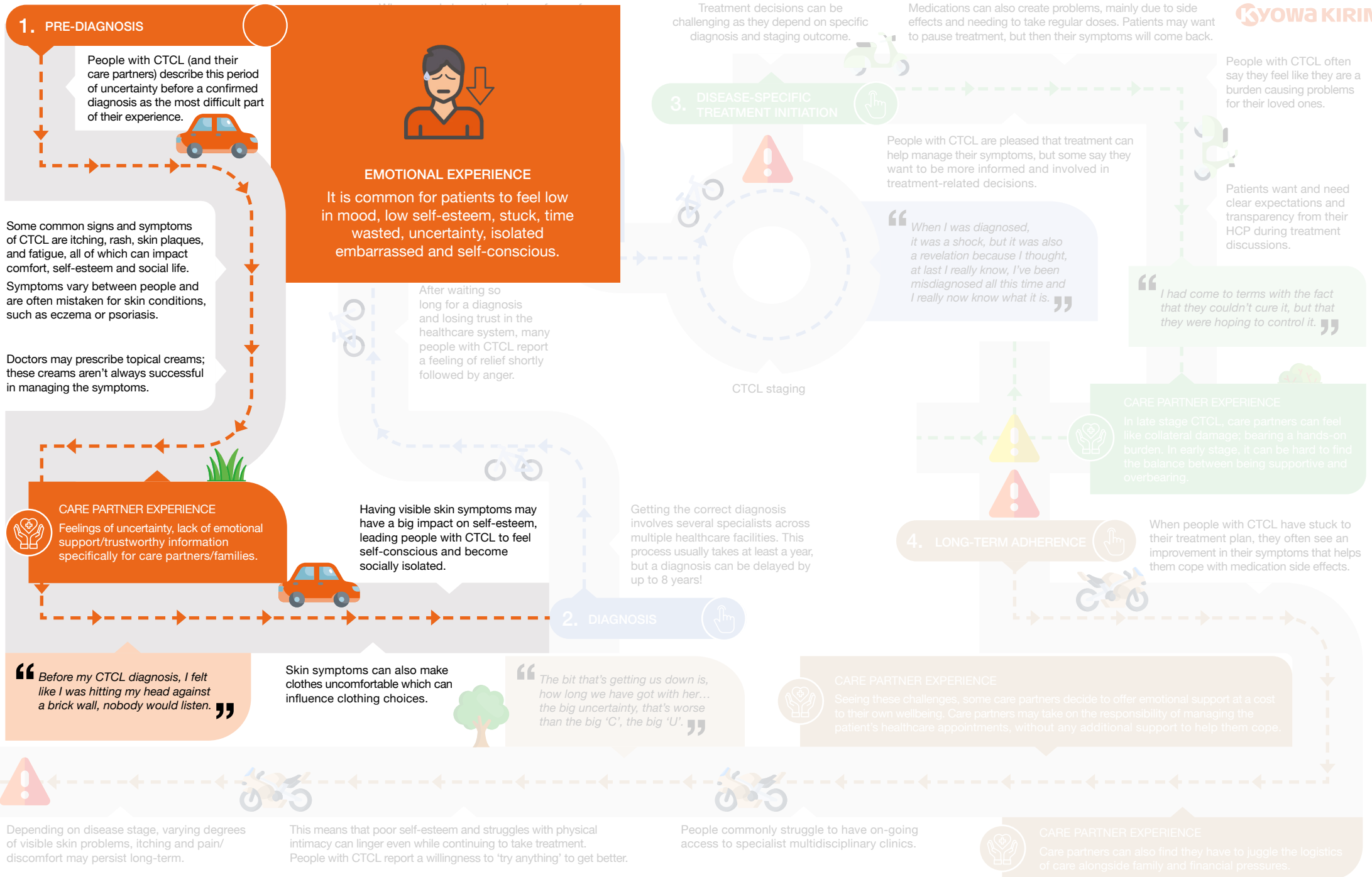


Mapping the lived healthcare experiences of people with cutaneous t-cell lymphoma (CTCL; mycosis fungoides and sézary syndrome)

The challenge of living with CTCL doesn't only come from uncomfortable symptoms; people with CTCL also struggle with the emotional burden of their condition. The emotional burden of CTCL can evolve over time, from getting a diagnosis to treatment, and beyond. Using insights from patient interviews, surveys and desk research, we've mapped how the feelings of people with CTCL can change over the course of their disease, and what unmet needs still exist in this community.

KKI/INT/KKI/1085 May 2025

This map was validated by Cutaneous Lymphoma Foundation and developed and fully funded by Kyowa Kirin International.

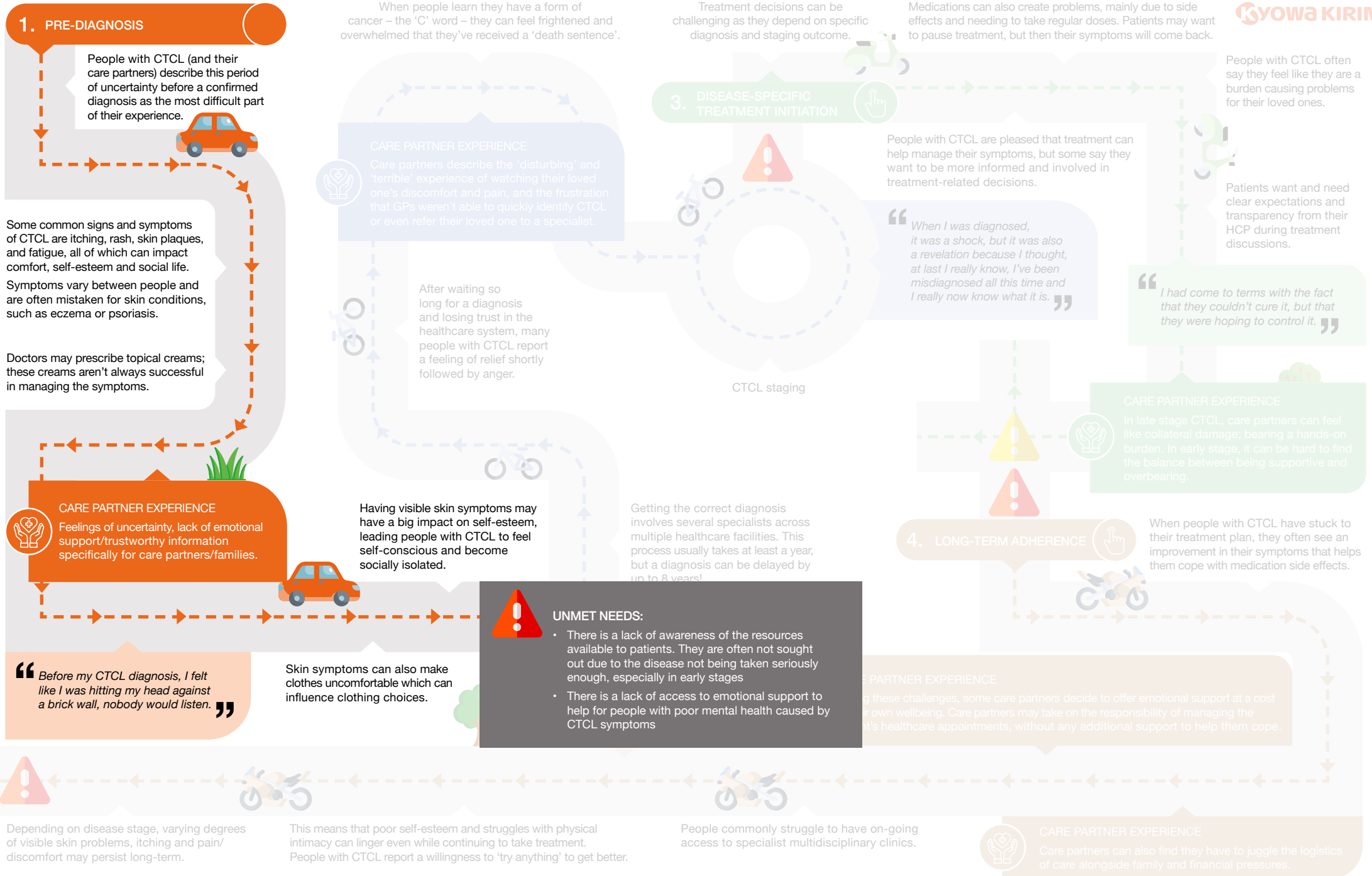


Mapping the lived healthcare experiences of people with cutaneous t-cell lymphoma (CTCL; mycosis fungoides and sézary syndrome)

The challenge of living with CTCL doesn't only come from uncomfortable symptoms; people with CTCL also struggle with the emotional burden of their condition. The emotional burden of CTCL can evolve over time, from getting a diagnosis to treatment, and beyond. Using insights from patient interviews, surveys and desk research, we've mapped how the feelings of people with CTCL can change over the course of their disease, and what unmet needs still exist in this community.

KKI/INT/KKI/1085 May 2025

This map was validated by Cutaneous Lymphoma Foundation and developed and fully funded by Kyowa Kirin International.

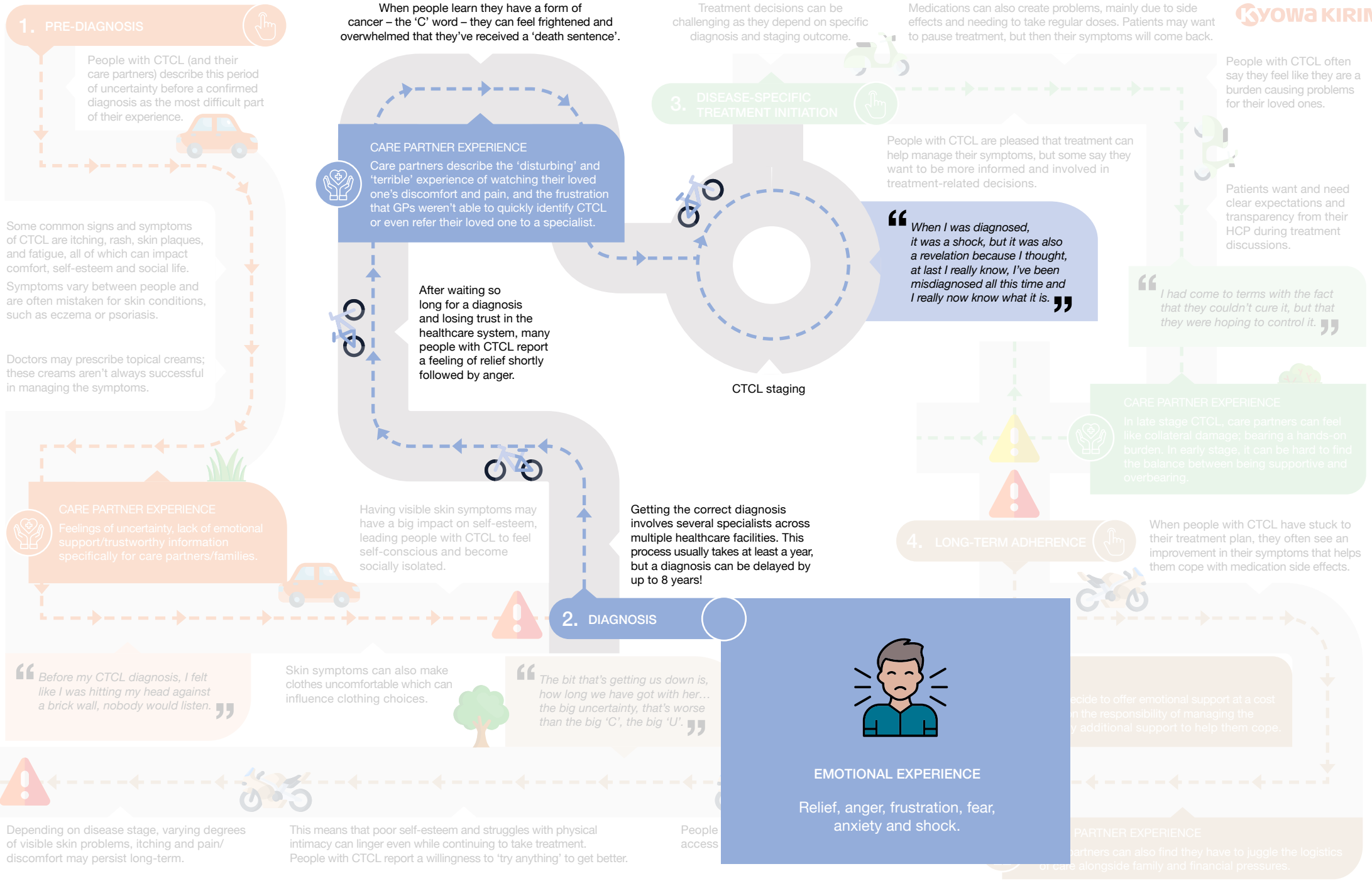


Mapping the lived healthcare experiences of people with cutaneous t-cell lymphoma (CTCL; mycosis fungoides and sézary syndrome)

The challenge of living with CTCL doesn't only come from uncomfortable symptoms; people with CTCL also struggle with the emotional burden of their condition. The emotional burden of CTCL can evolve over time, from getting a diagnosis to treatment, and beyond. Using insights from patient interviews, surveys and desk research, we've mapped how the feelings of people with CTCL can change over the course of their disease, and what unmet needs still exist in this community.

KKI/INT/KKI/1085 May 2025

This map was validated by Cutaneous Lymphoma Foundation and developed and fully funded by Kyowa Kirin International.

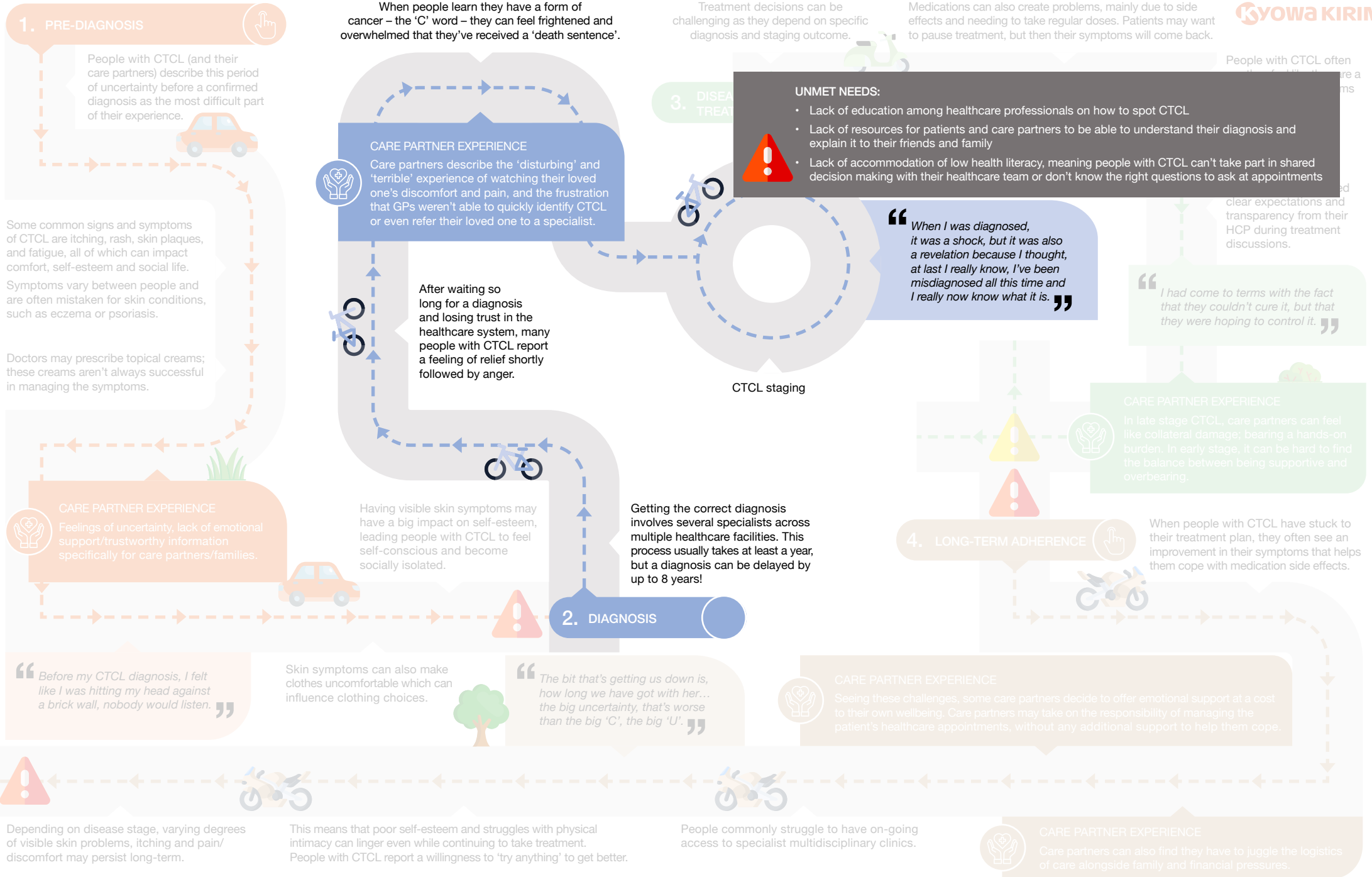


Mapping the lived healthcare experiences of people with cutaneous t-cell lymphoma (CTCL; mycosis fungoides and sézary syndrome)

The challenge of living with CTCL doesn't only come from uncomfortable symptoms; people with CTCL also struggle with the emotional burden of their condition. The emotional burden of CTCL can evolve over time, from getting a diagnosis to treatment, and beyond. Using insights from patient interviews, surveys and desk research, we've mapped how the feelings of people with CTCL can change over the course of their disease, and what unmet needs still exist in this community.

KKI/INT/KKI/1085 May 2025

This map was validated by Cutaneous Lymphoma Foundation and developed and fully funded by Kyowa Kirin International.

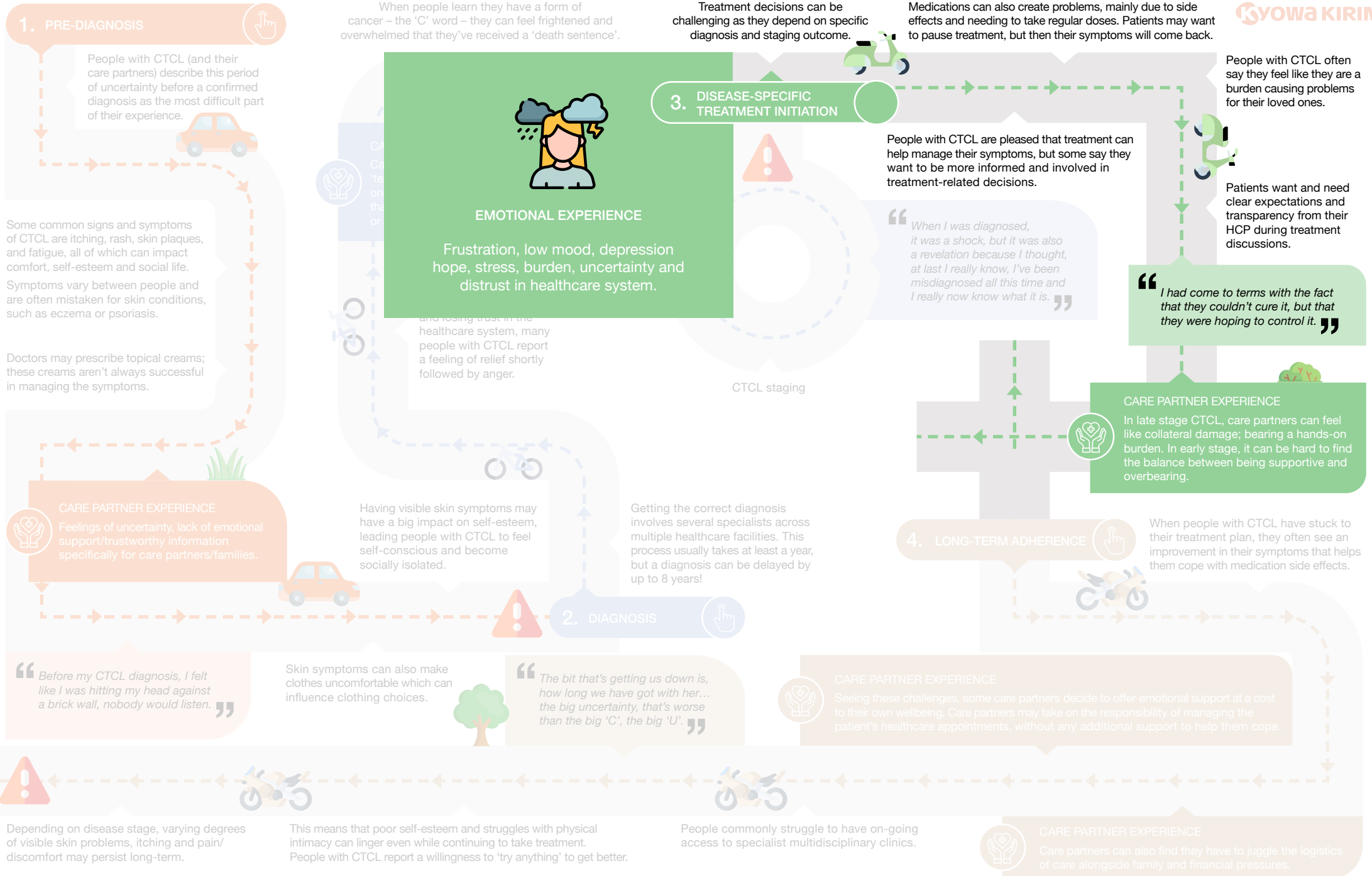


Mapping the lived healthcare experiences of people with cutaneous t-cell lymphoma (CTCL; mycosis fungoides and sézary syndrome)

The challenge of living with CTCL doesn't only come from uncomfortable symptoms; people with CTCL also struggle with the emotional burden of their condition. The emotional burden of CTCL can evolve over time, from getting a diagnosis to treatment, and beyond. Using insights from patient interviews, surveys and desk research, we've mapped how the feelings of people with CTCL can change over the course of their disease, and what unmet needs still exist in this community.

KKI/INT/KKI/1085 May 2025

This map was validated by Cutaneous Lymphoma Foundation and developed and fully funded by Kyowa Kirin International.

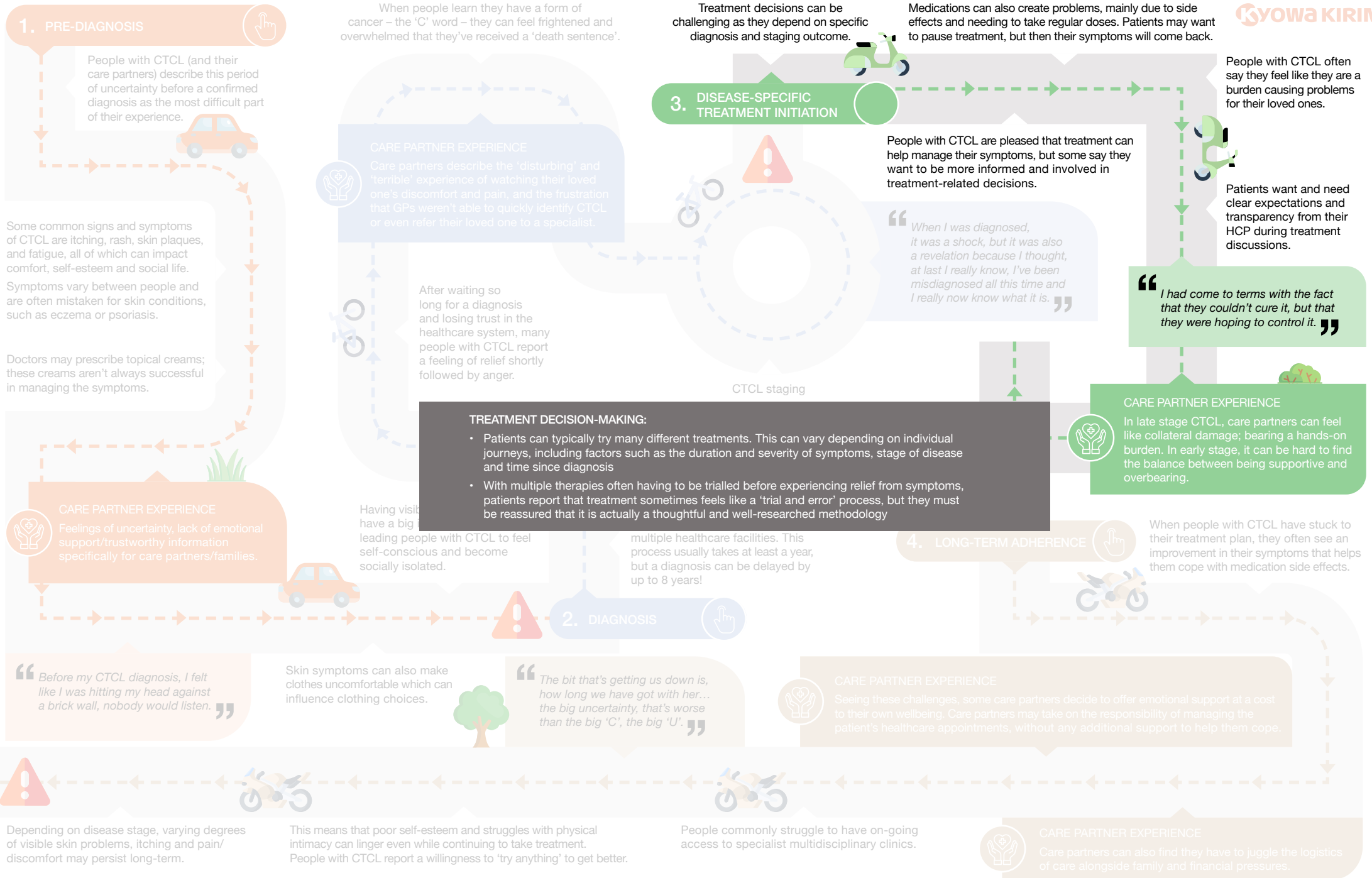


Mapping the lived healthcare experiences of people with cutaneous t-cell lymphoma (CTCL; mycosis fungoides and sézary syndrome)

The challenge of living with CTCL doesn't only come from uncomfortable symptoms; people with CTCL also struggle with the emotional burden of their condition. The emotional burden of CTCL can evolve over time, from getting a diagnosis to treatment, and beyond. Using insights from patient interviews, surveys and desk research, we've mapped how the feelings of people with CTCL can change over the course of their disease, and what unmet needs still exist in this community.

KKI/INT/KKI/1085 May 2025

This map was validated by Cutaneous Lymphoma Foundation and developed and fully funded by Kyowa Kirin International.

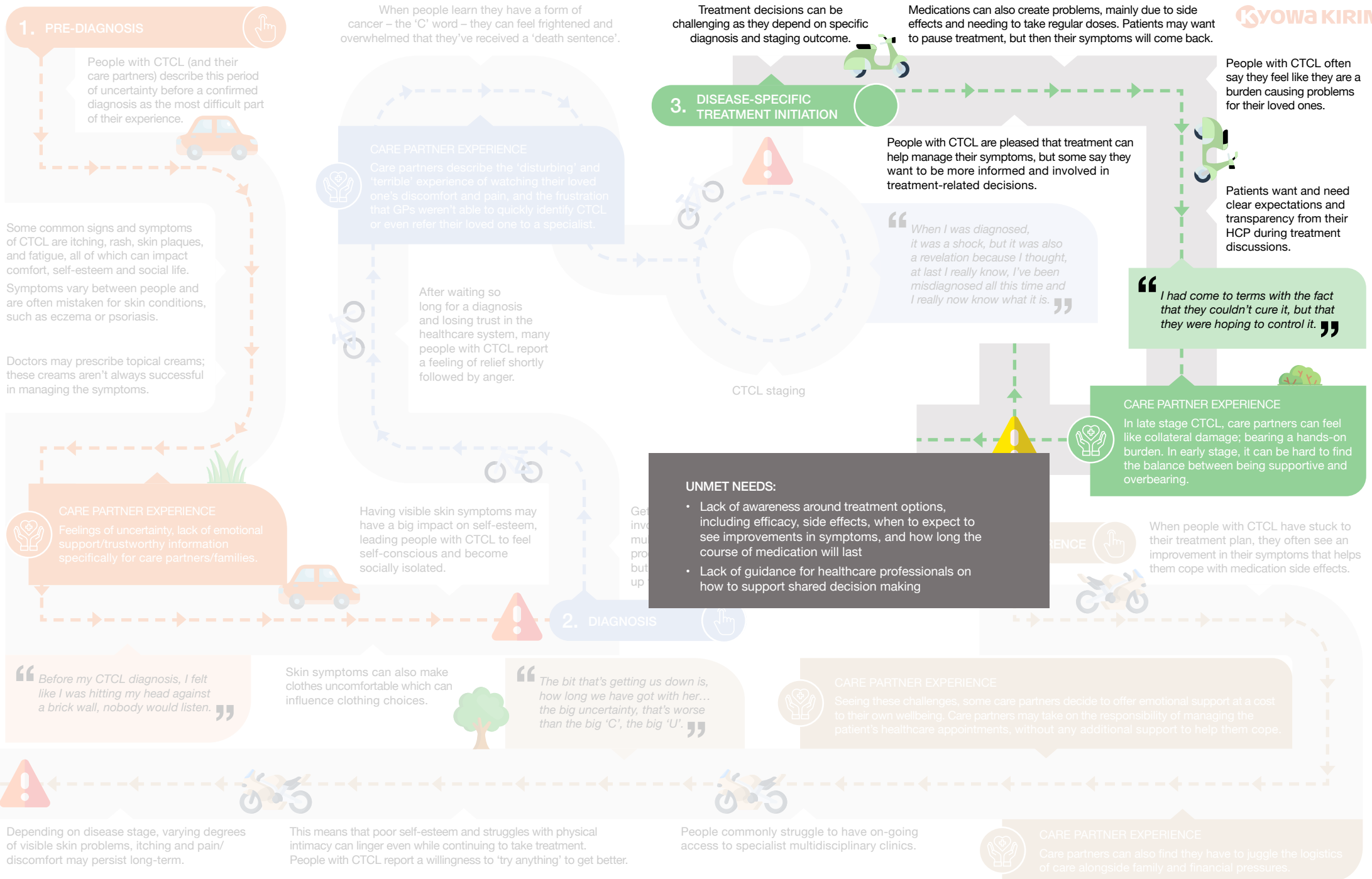


Mapping the lived healthcare experiences of people with cutaneous t-cell lymphoma (CTCL; mycosis fungoides and sézary syndrome)

The challenge of living with CTCL doesn't only come from uncomfortable symptoms; people with CTCL also struggle with the emotional burden of their condition. The emotional burden of CTCL can evolve over time, from getting a diagnosis to treatment, and beyond. Using insights from patient interviews, surveys and desk research, we've mapped how the feelings of people with CTCL can change over the course of their disease, and what unmet needs still exist in this community.

KKI/INT/KKI/1085 May 2025

This map was validated by Cutaneous Lymphoma Foundation and developed and fully funded by Kyowa Kirin International.

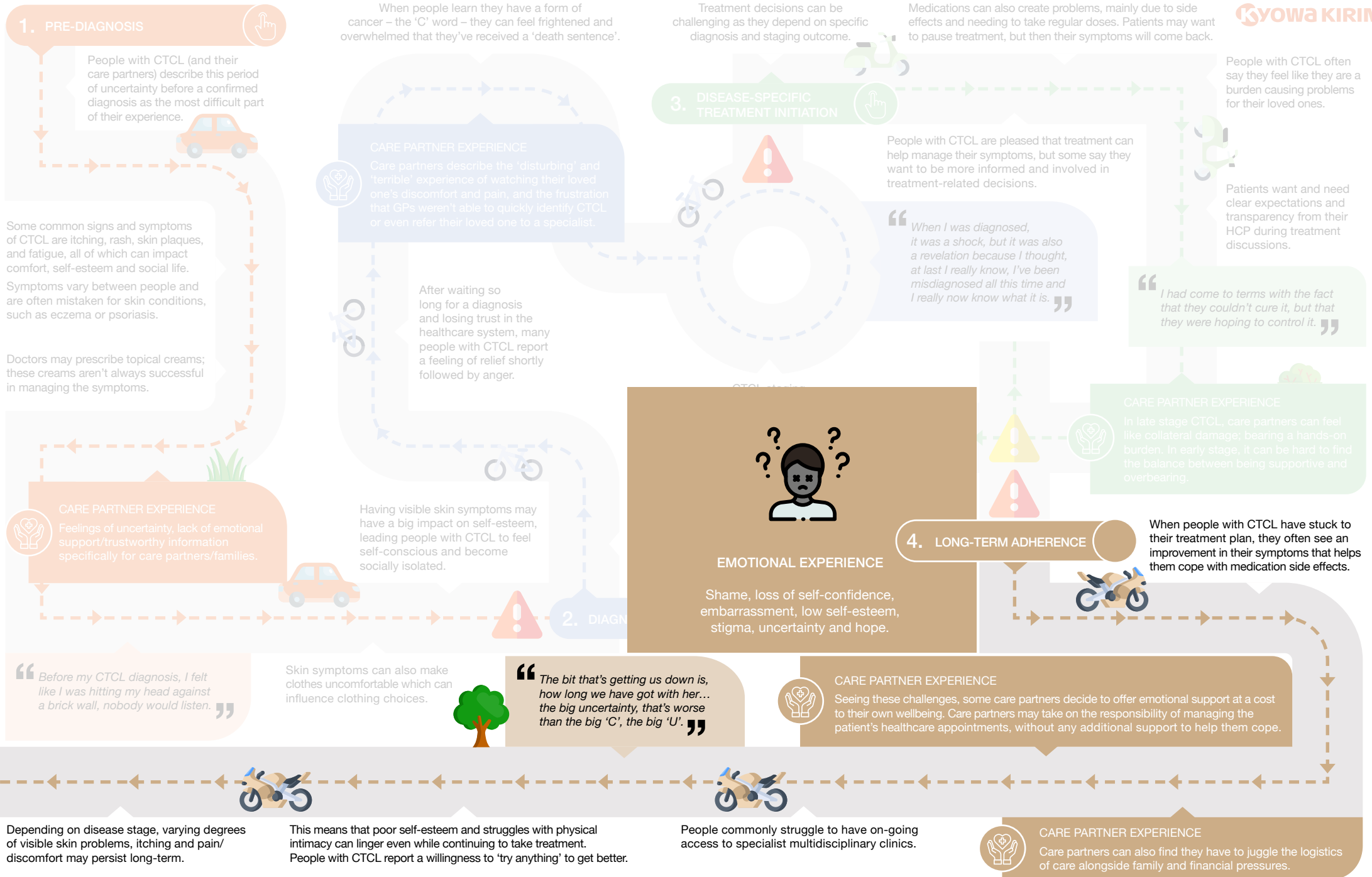


Mapping the lived healthcare experiences of people with cutaneous t-cell lymphoma (CTCL; mycosis fungoides and sézary syndrome)

The challenge of living with CTCL doesn't only come from uncomfortable symptoms; people with CTCL also struggle with the emotional burden of their condition. The emotional burden of CTCL can evolve over time, from getting a diagnosis to treatment, and beyond. Using insights from patient interviews, surveys and desk research, we've mapped how the feelings of people with CTCL can change over the course of their disease, and what unmet needs still exist in this community.

KKI/INT/KKI/1085 May 2025

This map was validated by Cutaneous Lymphoma Foundation and developed and fully funded by Kyowa Kirin International.



Mapping the lived healthcare experiences of people with cutaneous t-cell lymphoma (CTCL; mycosis fungoides and sézary syndrome)

The challenge of living with CTCL doesn't only come from uncomfortable symptoms; people with CTCL also struggle with the emotional burden of their condition. The emotional burden of CTCL can evolve over time, from getting a diagnosis to treatment, and beyond. Using insights from patient interviews, surveys and desk research, we've mapped how the feelings of people with CTCL can change over the course of their disease, and what unmet needs still exist in this community.

KKI/INT/KKI/1085 May 2025

This map was validated by Cutaneous Lymphoma Foundation and developed and fully funded by Kyowa Kirin International.

